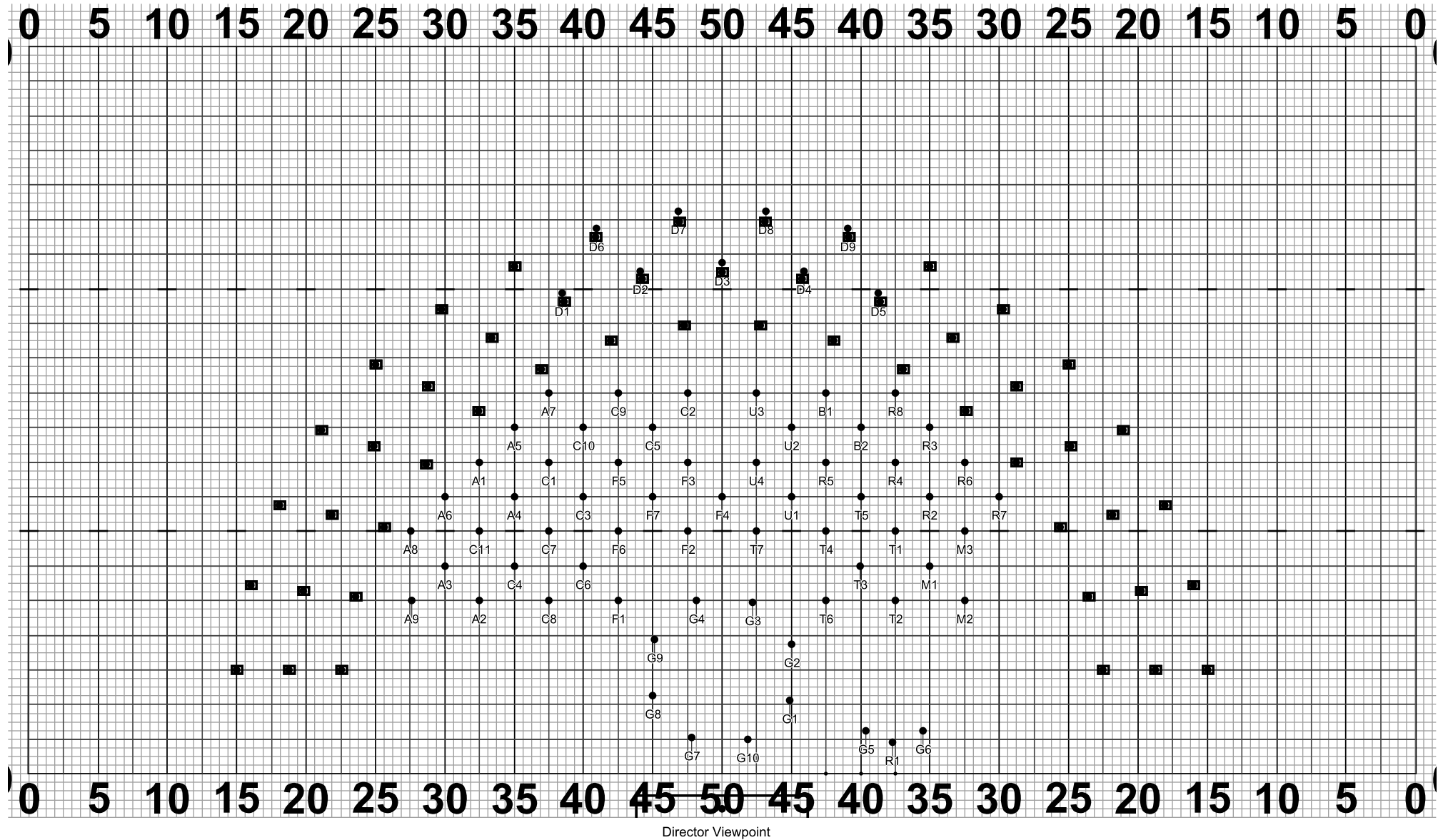


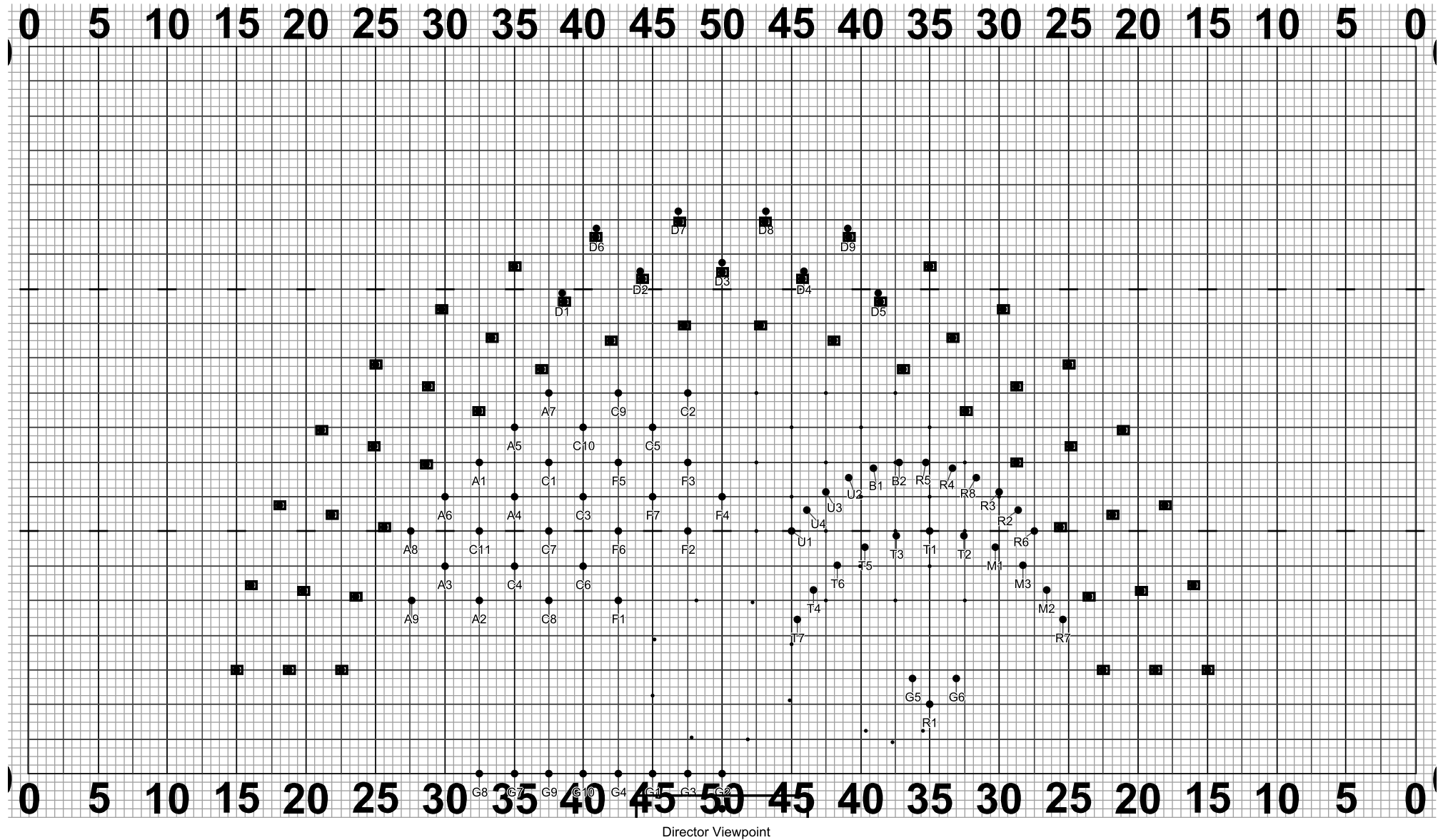
Set #22 Counts: 0 Measures: 0

First set of mvt 2



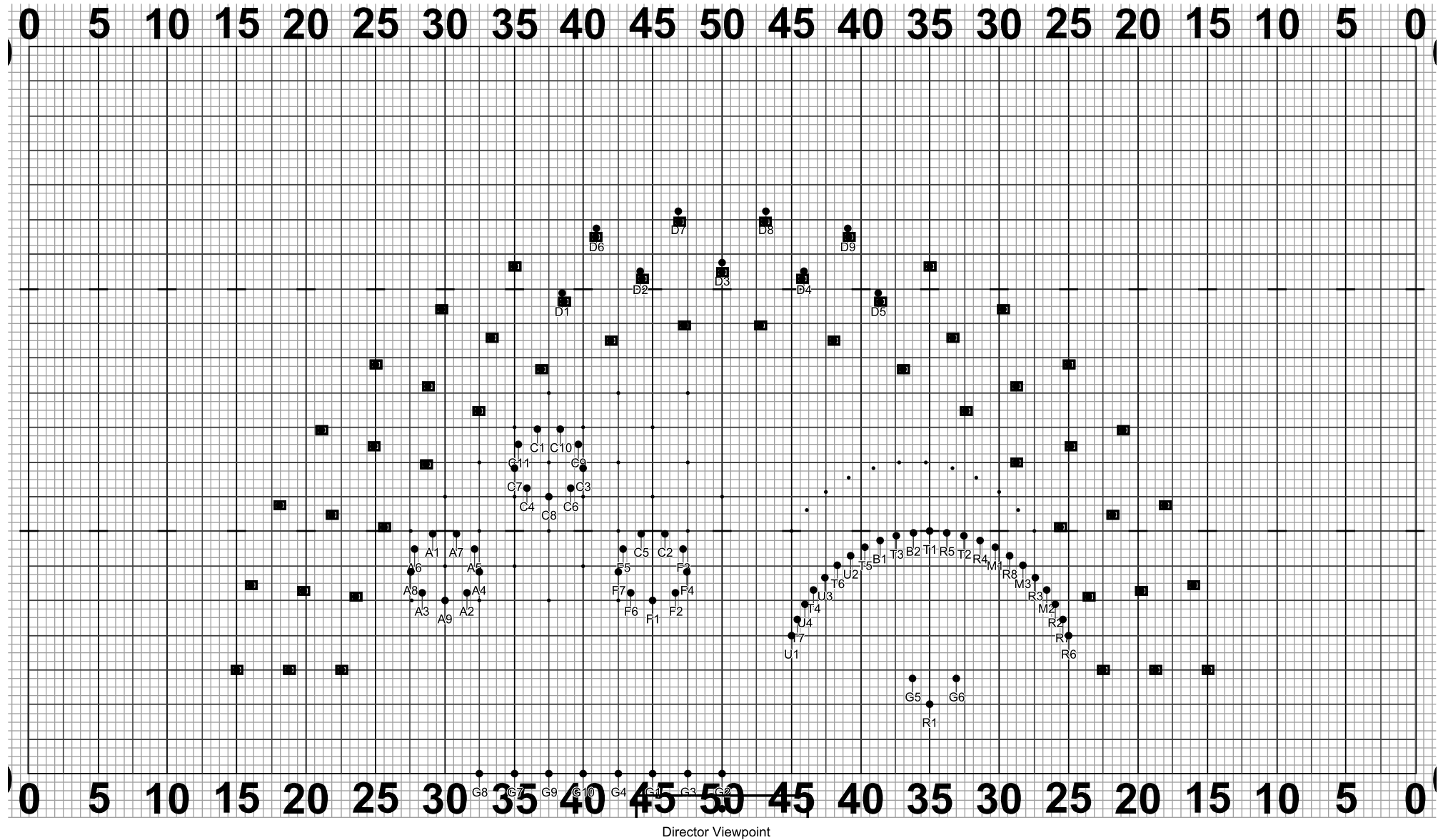
Set #23 Counts: 18 Measures: F 1 - 6

Hold 18  
Last 8 or so the soloist and guard duet can start moving. Experiment with how many counts to make intentional and non distracting.



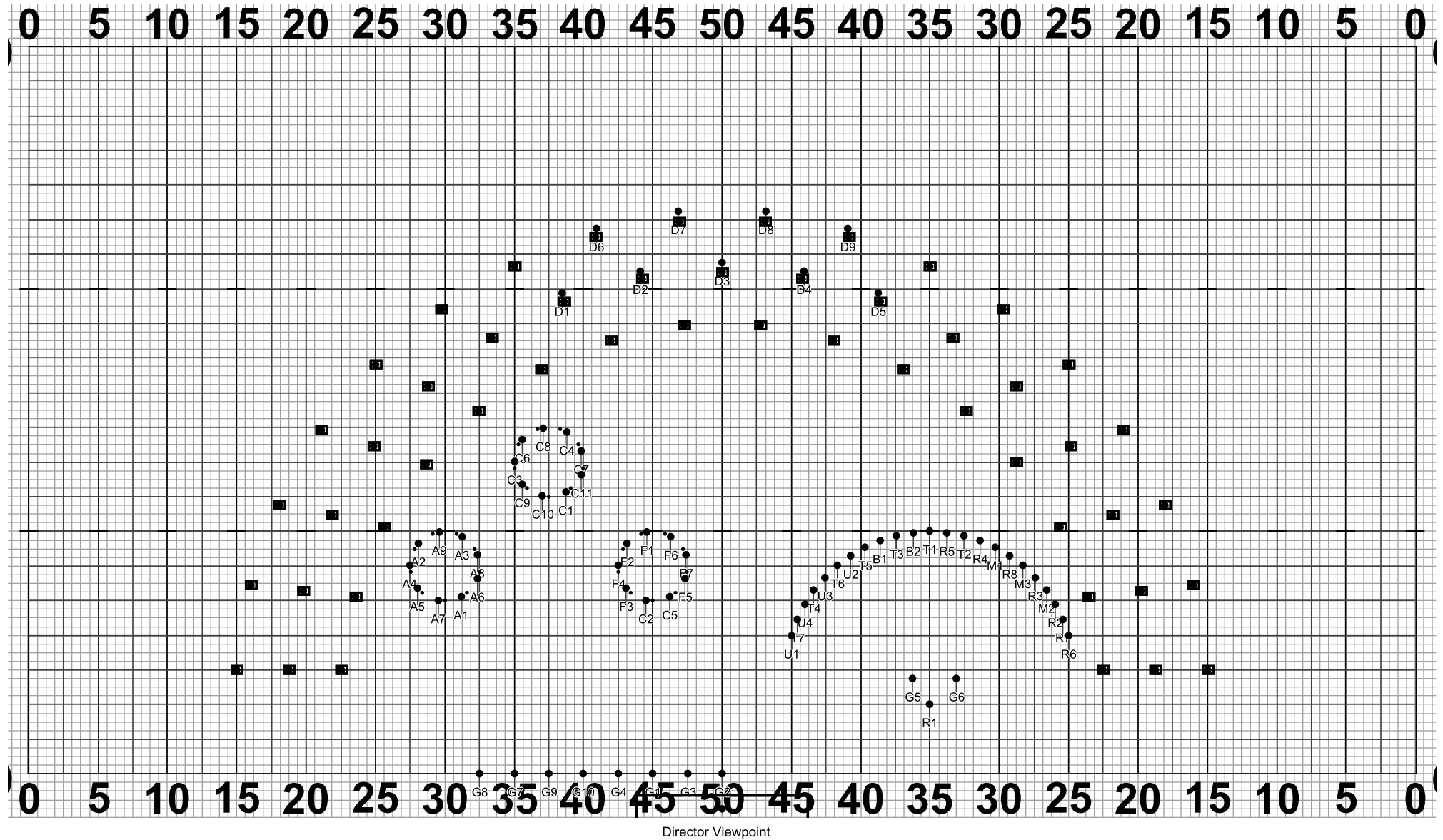
Set #24 Counts: 12 Measures: 7 - 10

Move 12  
Flags move to sideline for equipment change. Take longer than 12 counts as needed so step size does not look hurried.



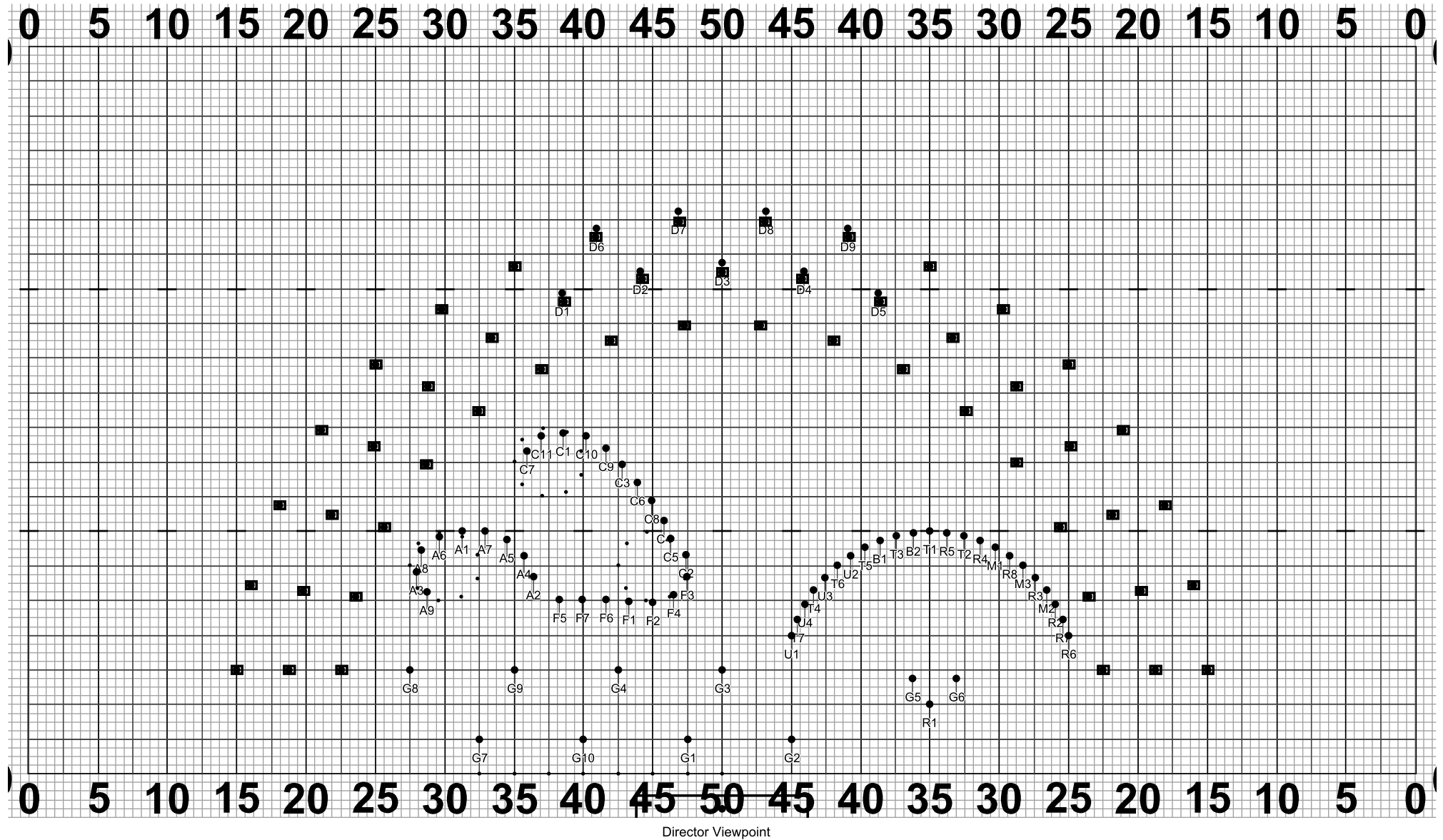
Set #25 Counts: 18 Measures:

Move 18  
Trombones and sousas round paths slightly to avoid collisions as the arcs mesh



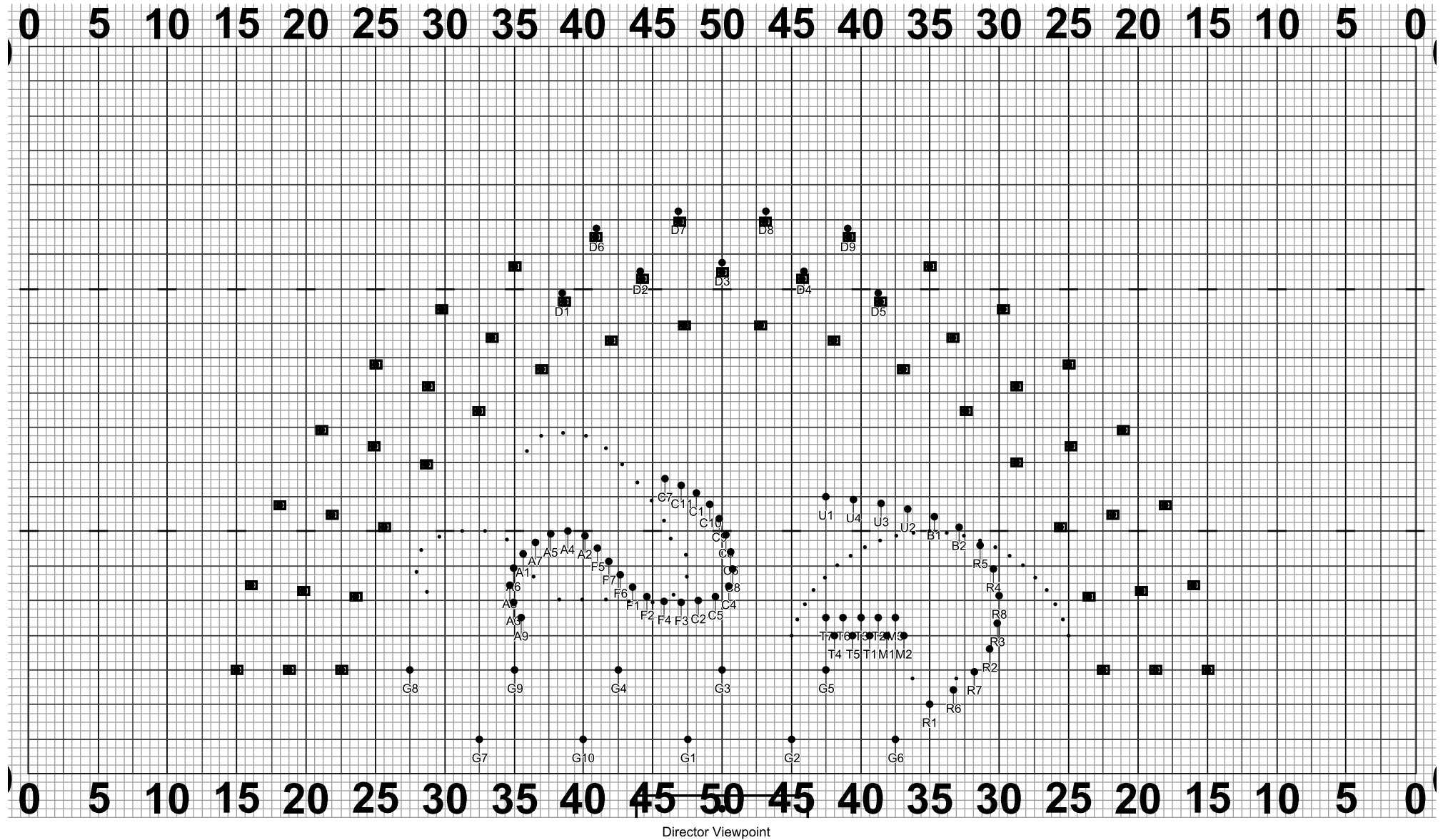
Set #26 Counts: 12 Measures: 11 - 20

Move 12  
Woodwinds face direction of motion and move 8 to 5 around circle. Could add arm motion or similar.



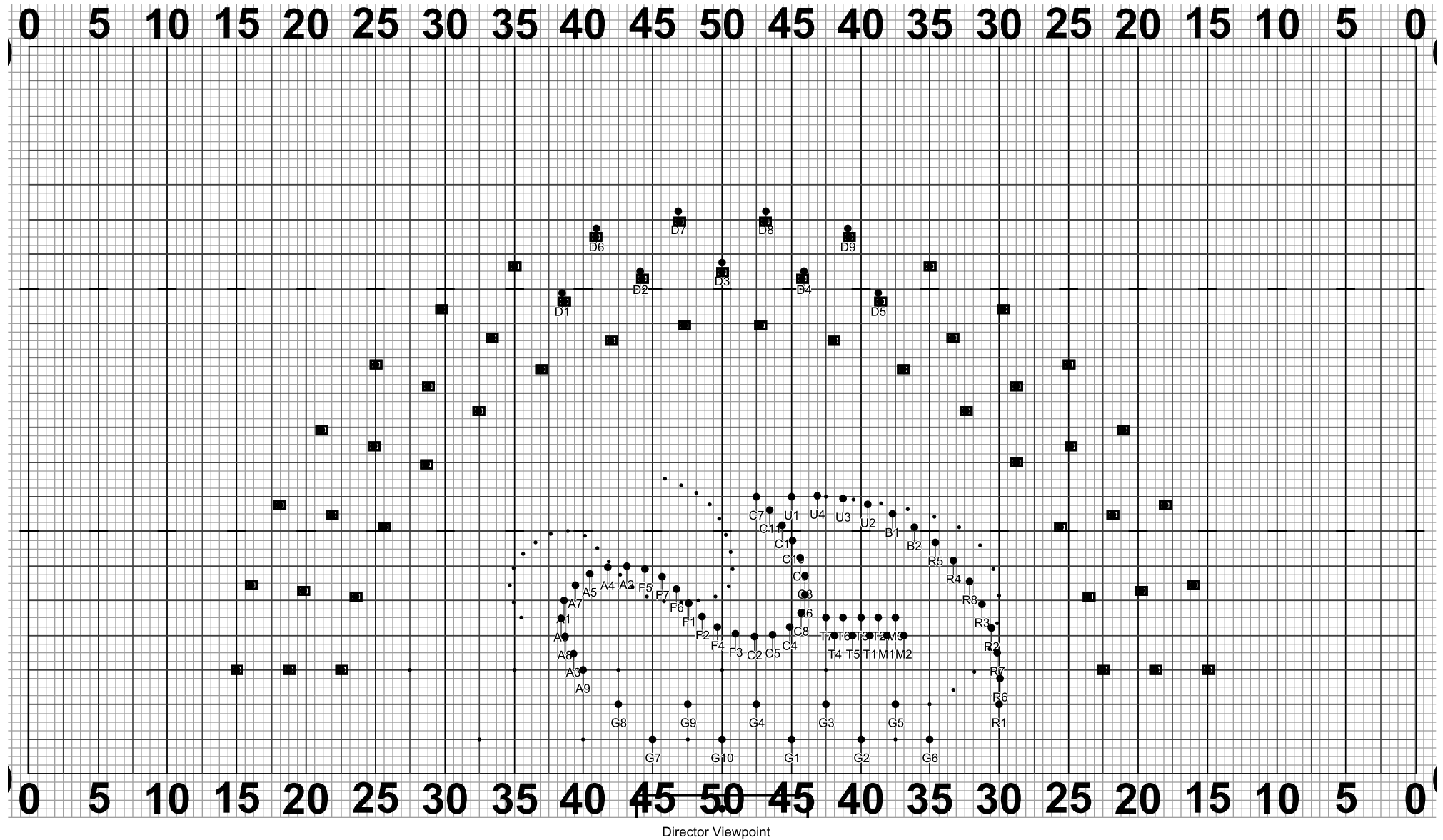
Set #27 Counts: 21 Measures: G 21 - 27

Move 21  
Woodwinds continue follow the leader  
Guard begins entering off front sideline. (Optional: Leave every 3 counts in groups of 2)



Set #28 Counts: 18 Measures: 28 - 33

Move 18

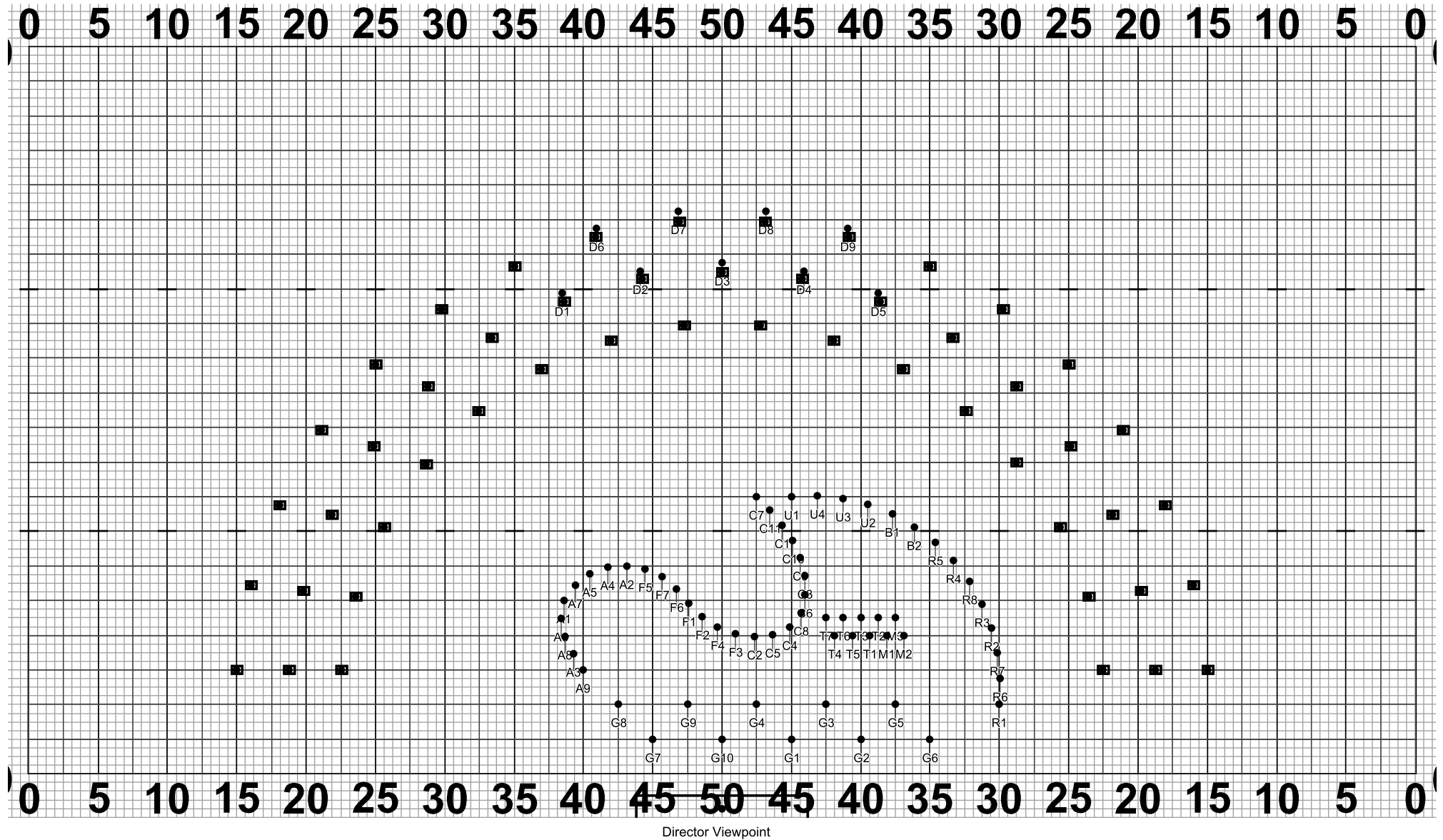


Set #29 Counts: 12 Measures: H 34 - 37

Move 12

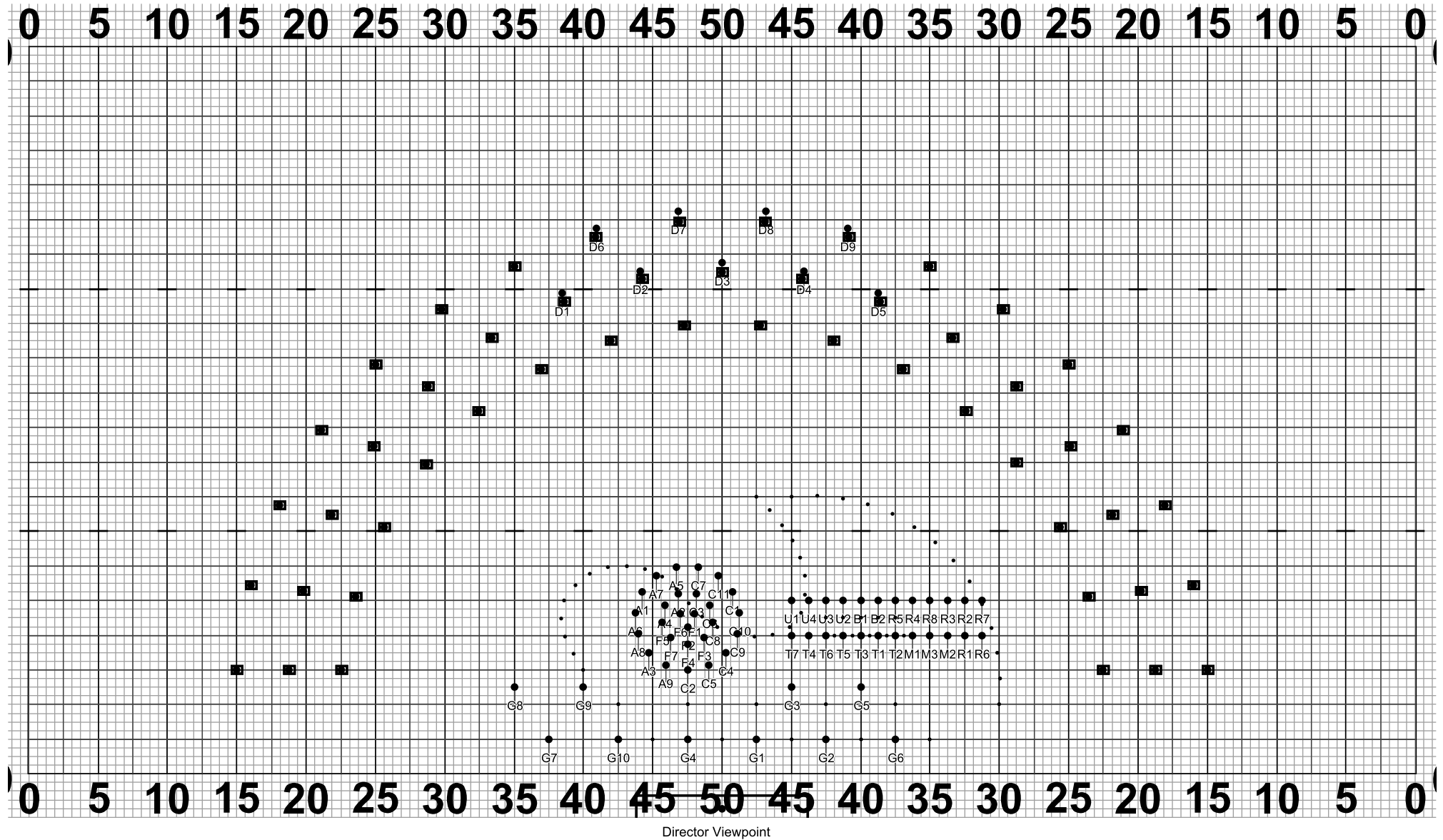
RIGHT FOOT STEP OFF





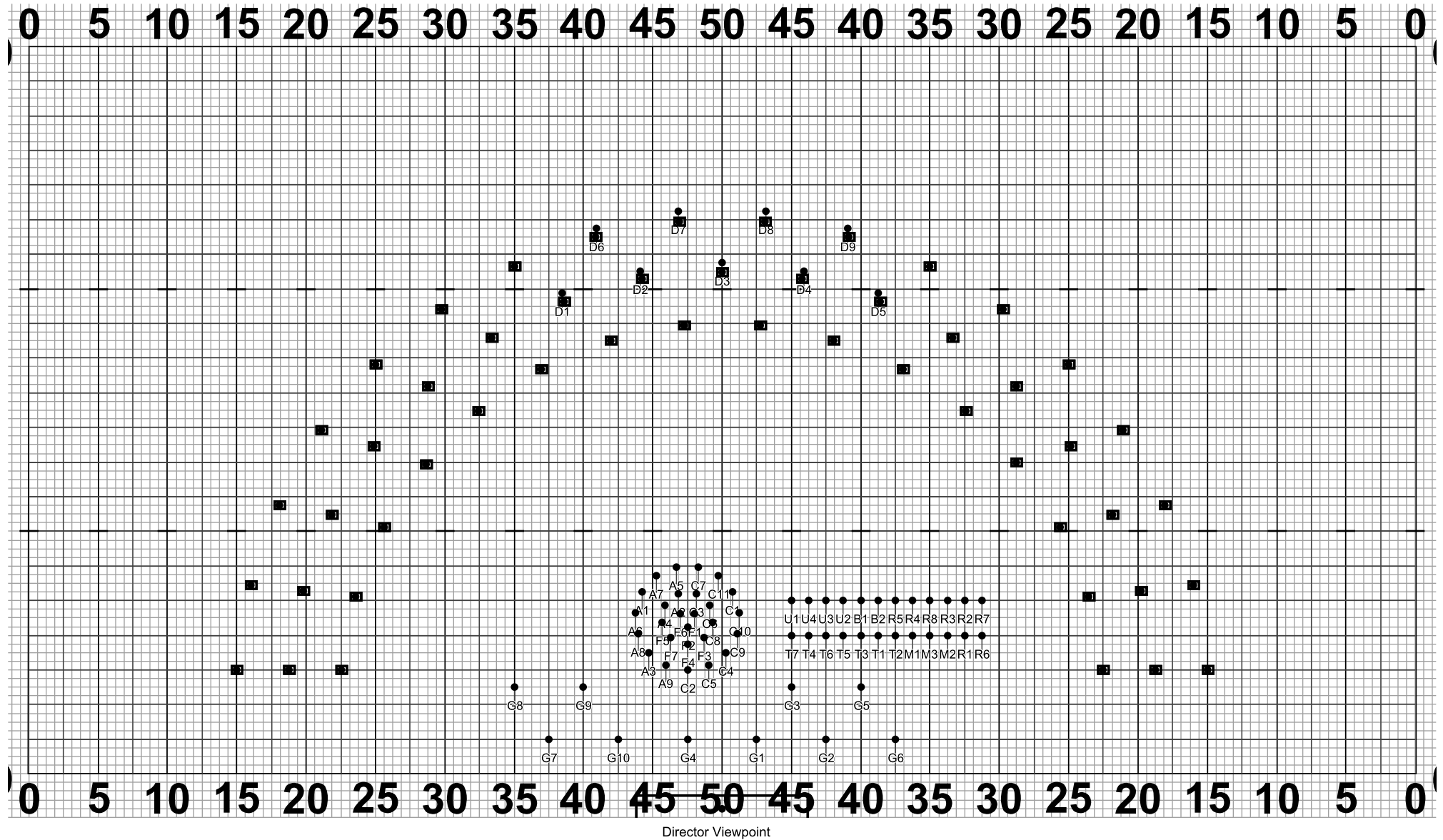
Set #30 Counts: 8 Measures: 38 - 40

Hold 8



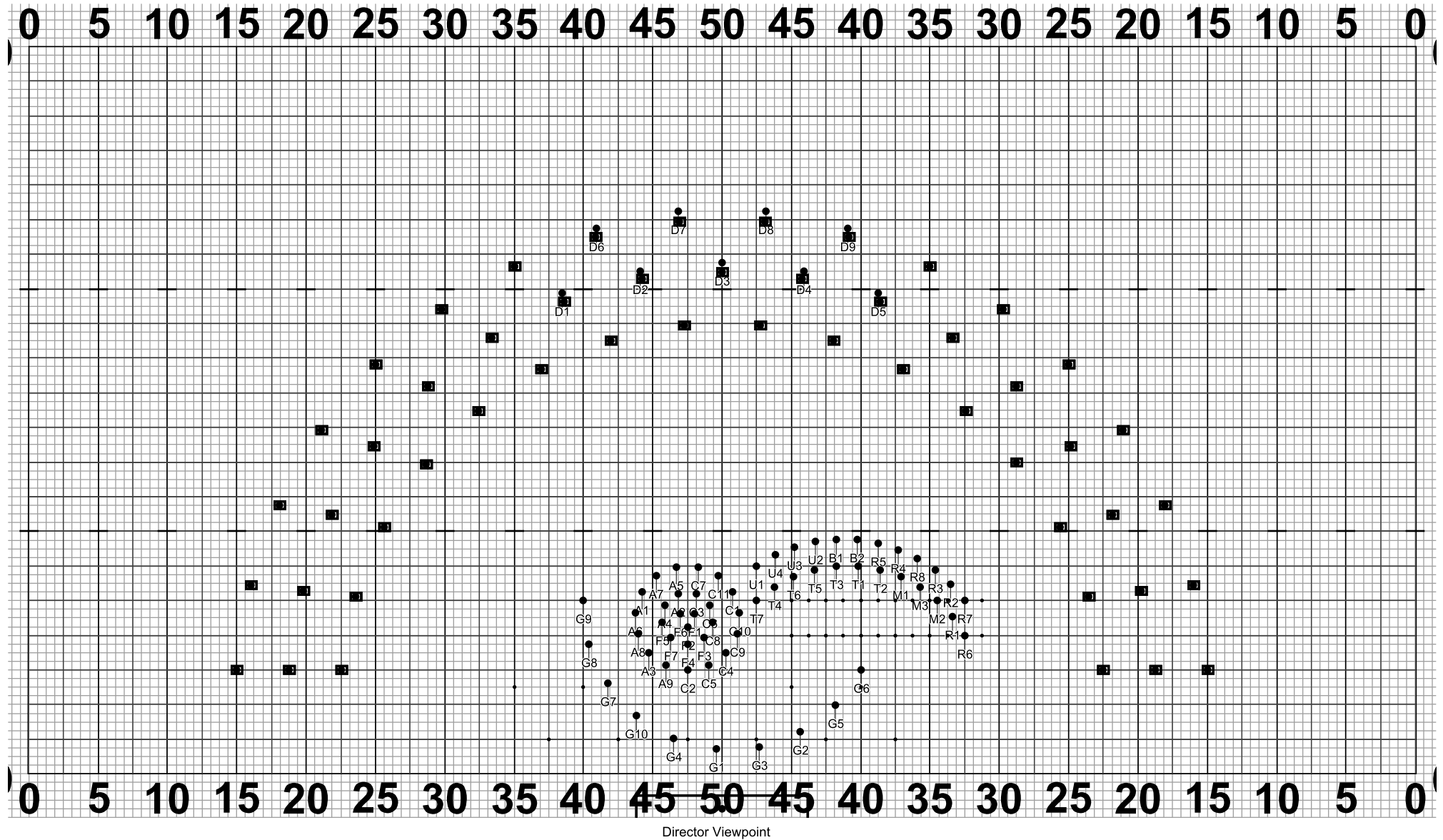
Set #31 Counts: 10 Measures: 141 - 142

Move 10  
Back to left foot step off



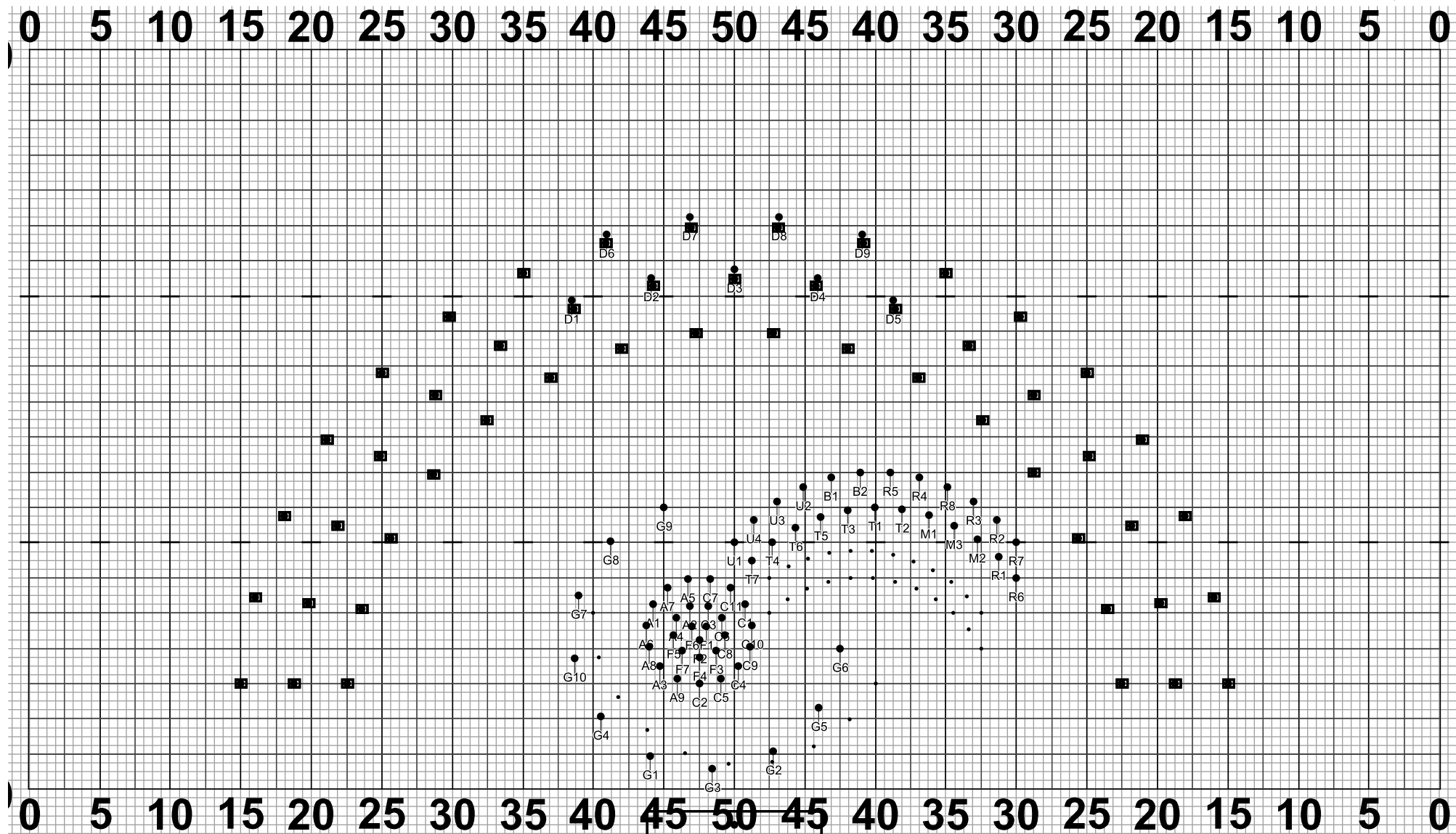
Set #32 Counts: 4 Measures: 43

Hold 4  
Optional: Brass could turn backfield and do the next couple sets facing backfield



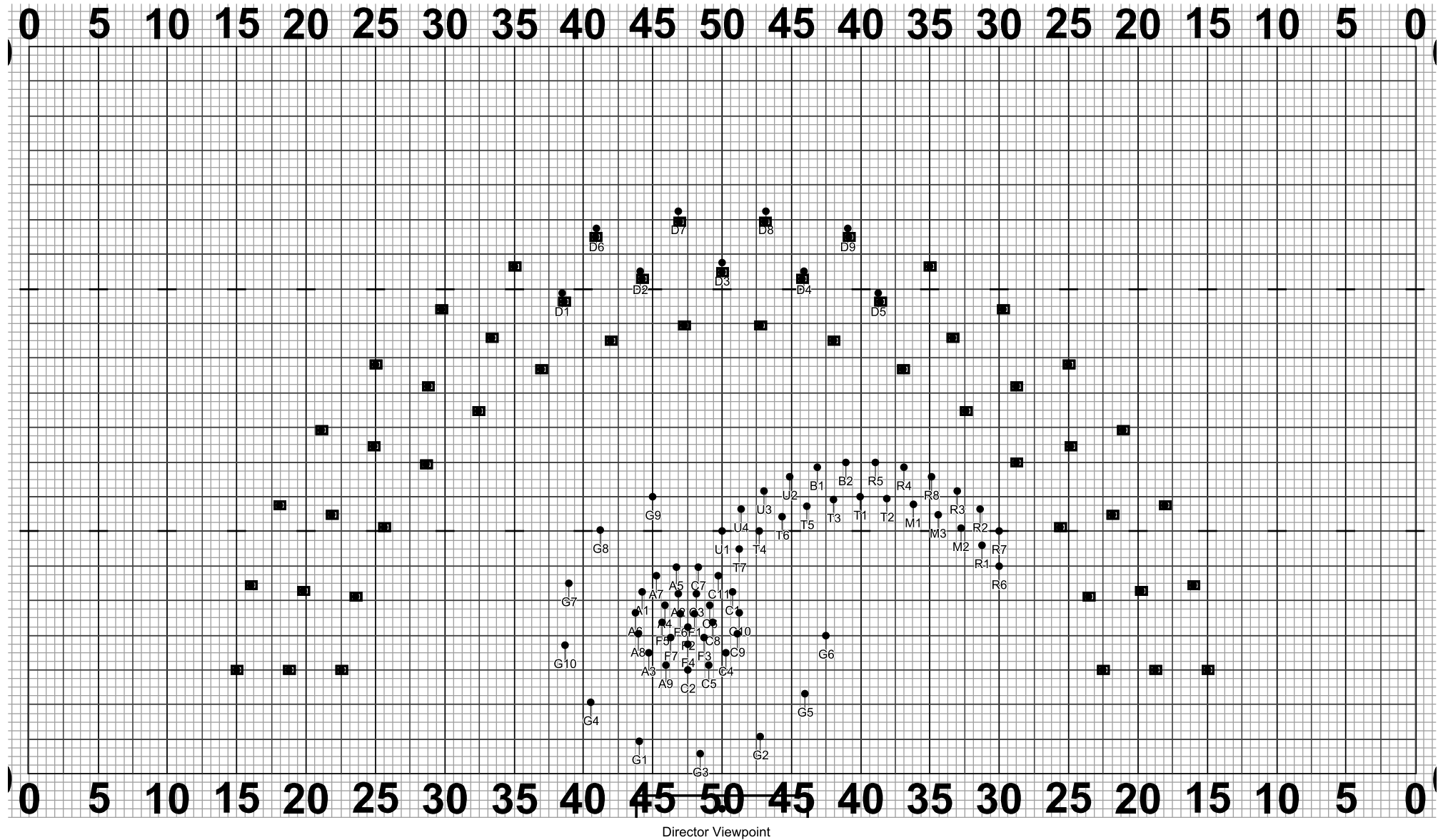
Set #33 Counts: 8 Measures: 44 - 45

Move 8



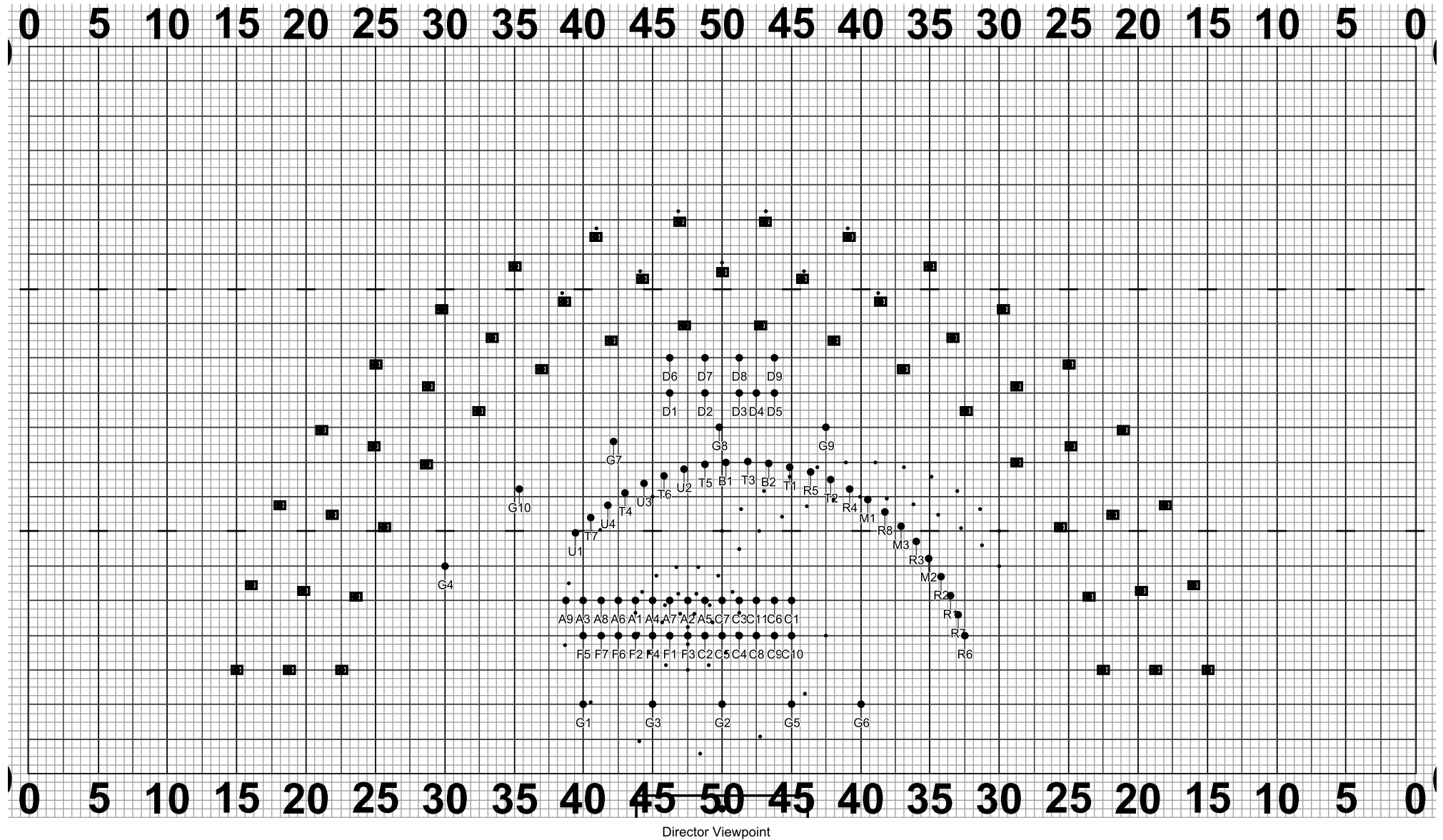
Set #34 Counts: 12 Measures: 46 - 49

Move 12



Set #35 Counts: 12 Measures: 50 - 53

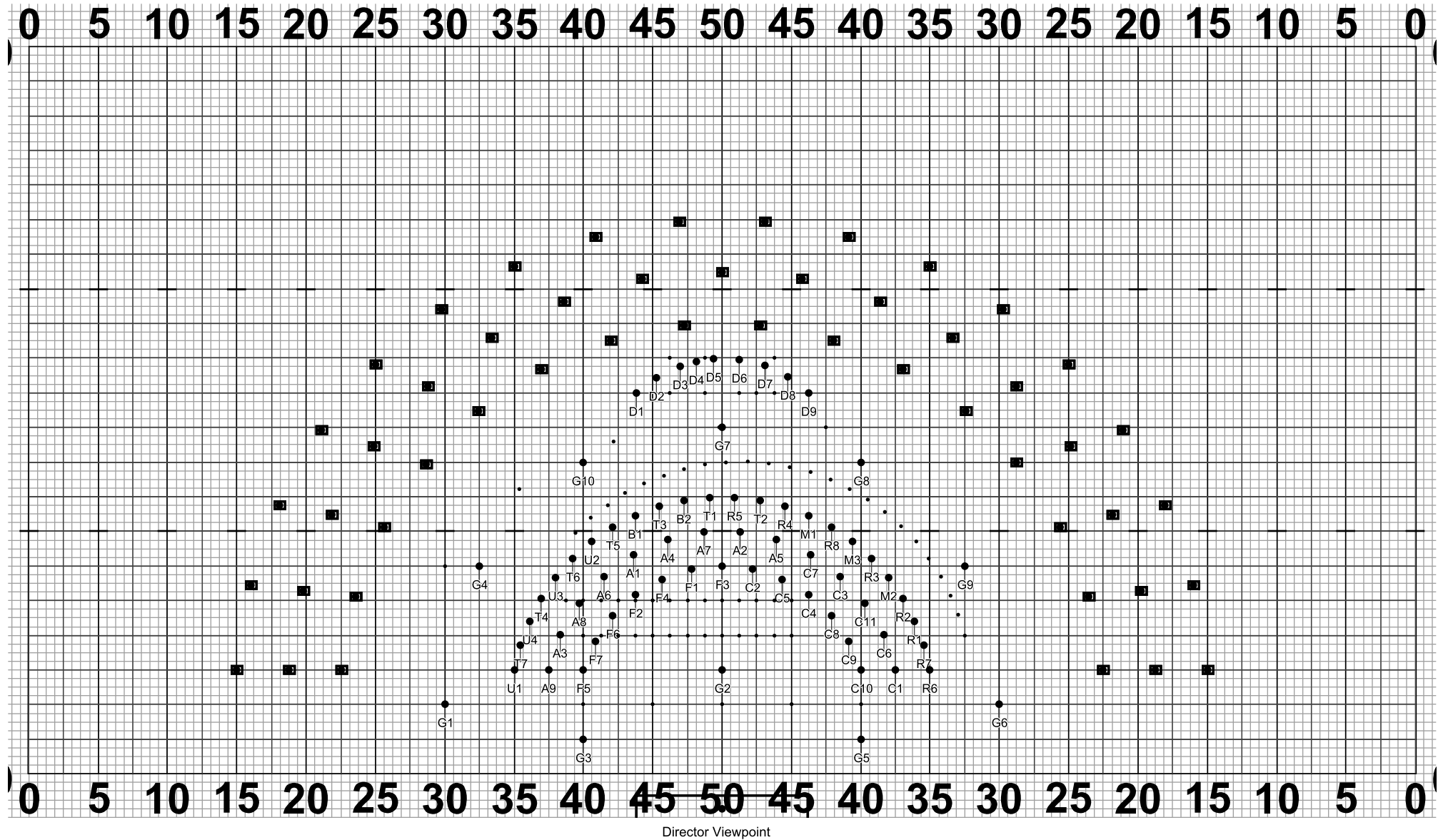
Hold 12



Set #36 Counts: 20 Measures: J 54 - 58

Move 20

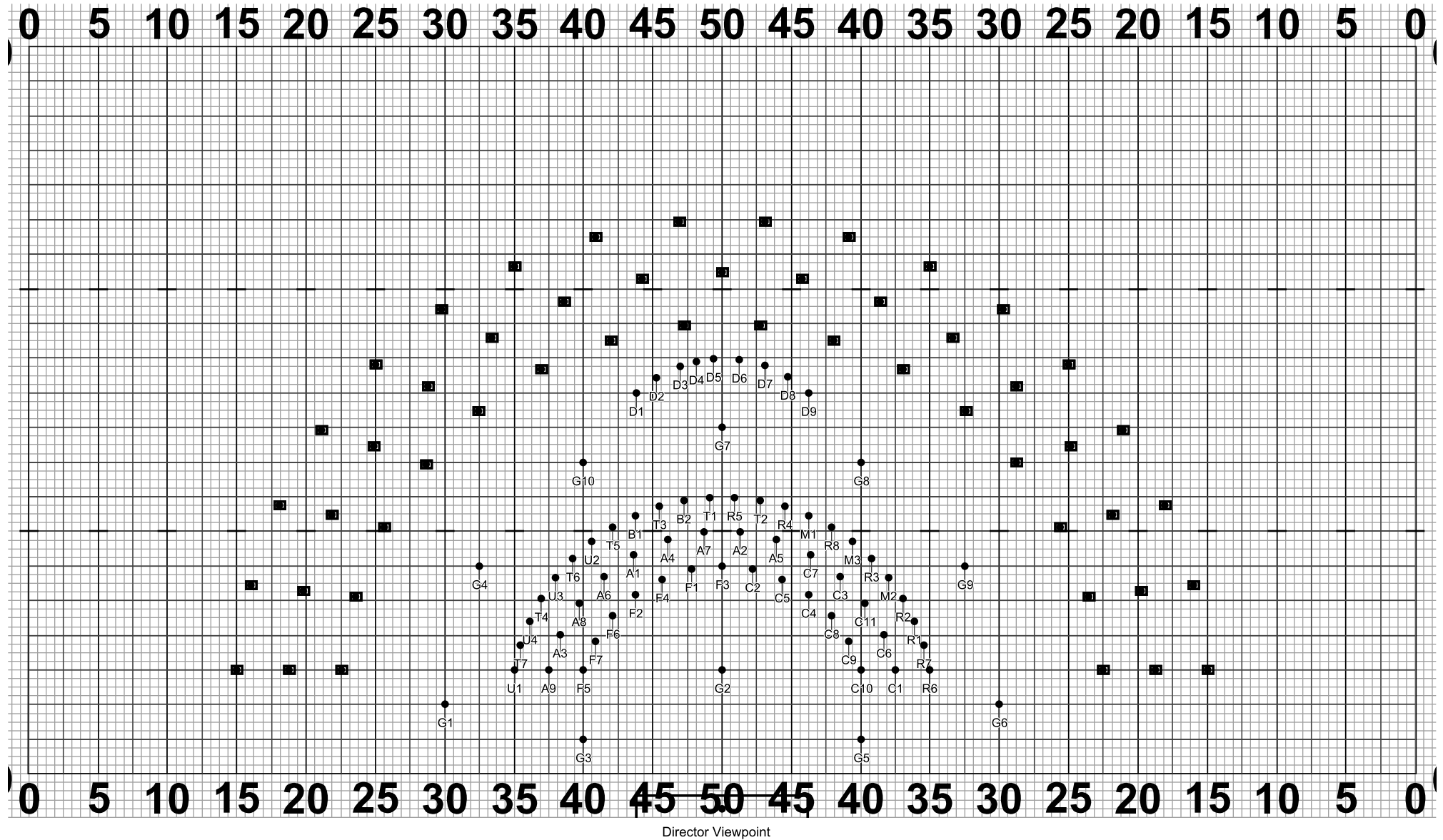
Altos on end, curve path as needed to avoid collisions  
F 5 yield to altos



Set #37 Counts: 20 Measures: 59 - 63

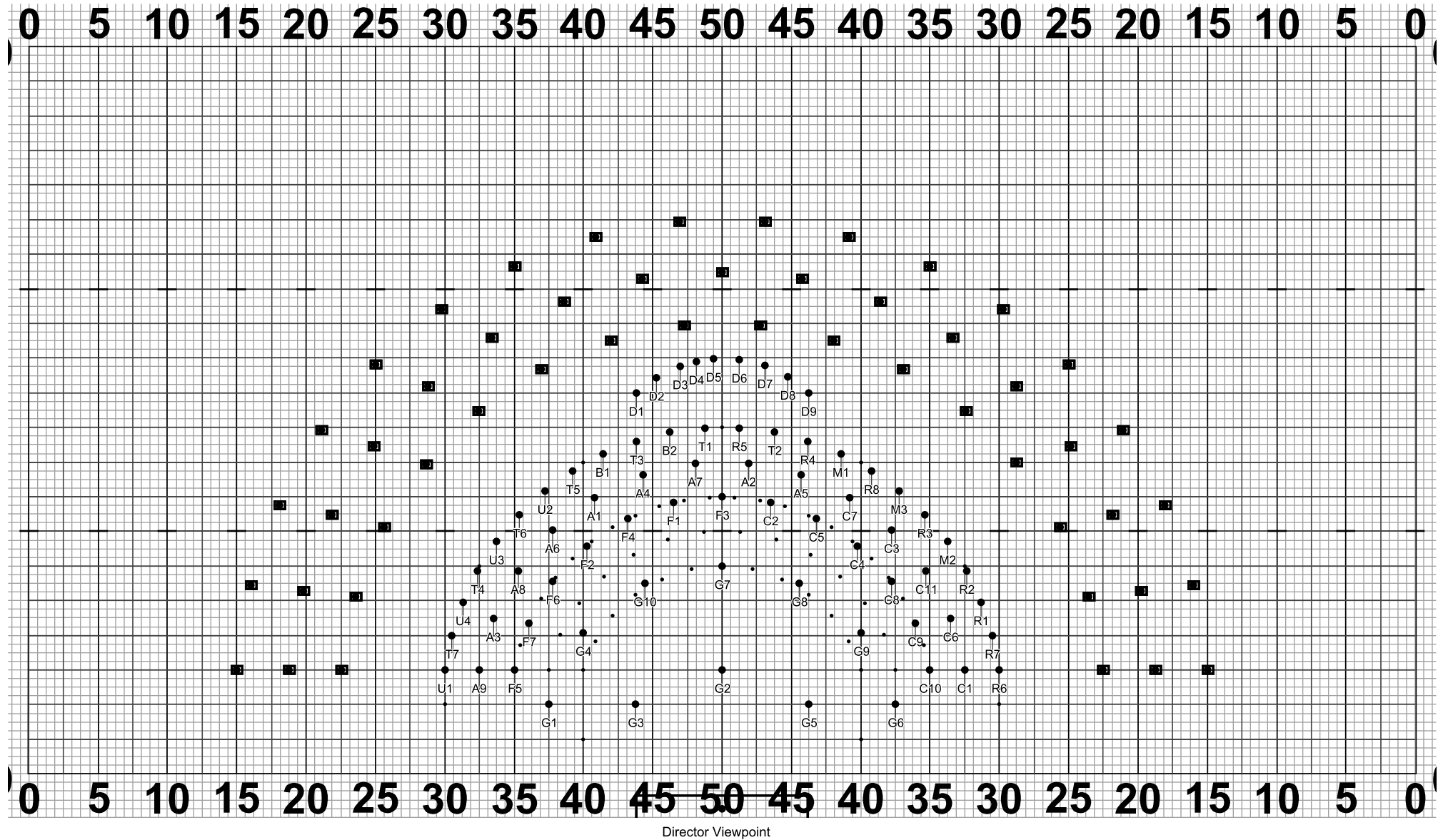
Move 20





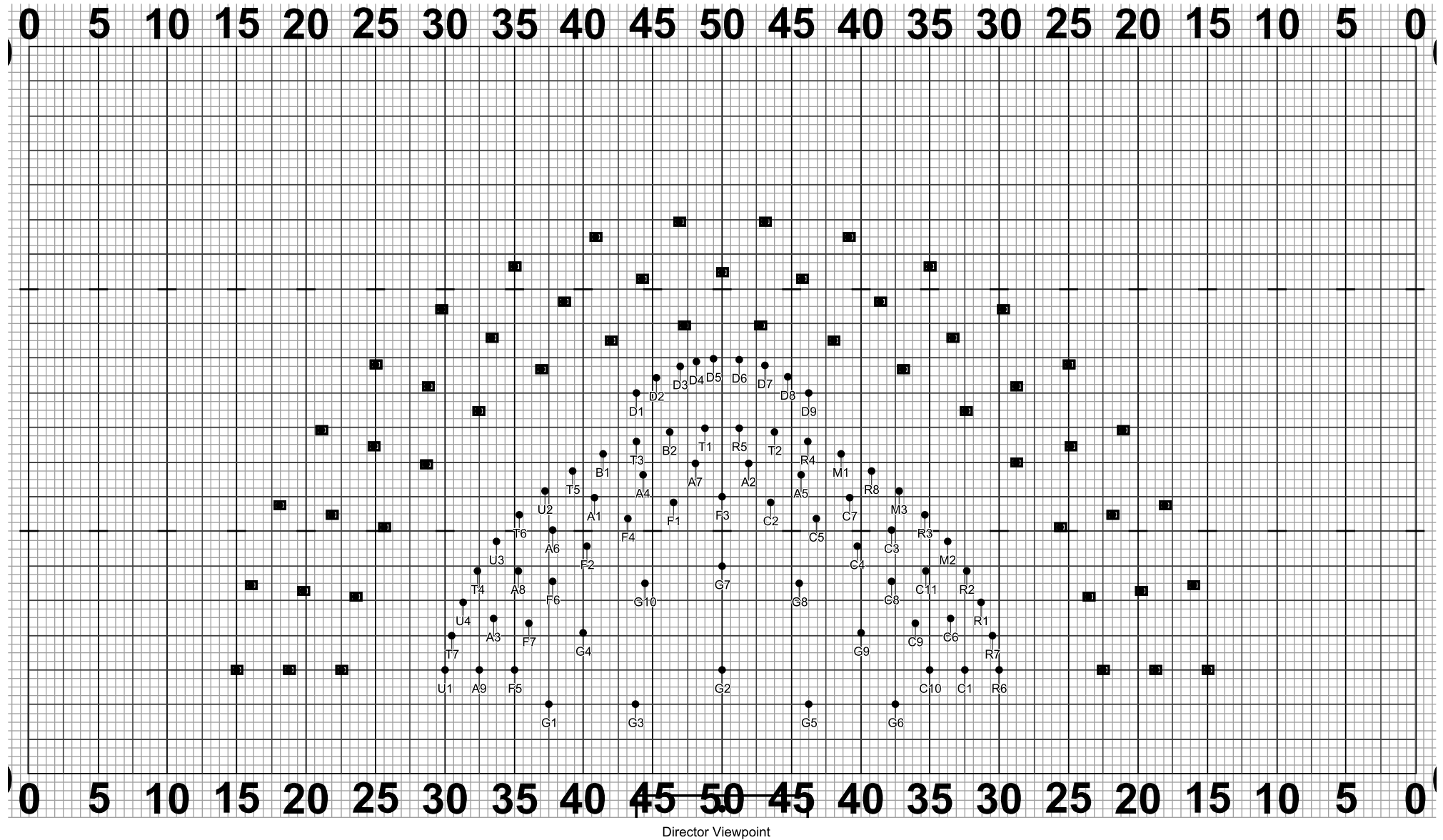
Set #38 Counts: 42 Measures: K64 - 74

Hold 42  
Add choreo for hold



Set #39 Counts: 12 Measures: 75 - 78

Move 12  
Guard move around winds as needed. Jazz run for more velocity.



Set #40 Counts: 8 Measures: 79 - 80

Hold 8